



State	Political	Economic
<p><b>WYOMING</b> <i>House: 1R</i></p> <p><i>State Legislature:</i> Senate: 23R, 7D House: 41R, 19D</p> <p><i>Caucus Champion:</i></p> <p><i>Caucus Coordinator:</i></p>	<p>Gov. Dave Freudenthal (D); 2<sup>nd</sup> term</p> <p>Sen. Michael Enzi (R), 3<sup>rd</sup> term; Budget; Finance; SmallBus; Ranking Mem., Health Ed. Labor &amp; Pensions (HELP)</p> <p>Sen. John Barrasso (R), 2<sup>nd</sup> term; E&amp;NR, E&amp;PW; FR; Vice-Chair, IA</p> <p>Rep. Cynthia Lummis (R), 1<sup>st</sup> term; At Large; Ag; Budget; NR</p>	<p><a href="http://www.wyoming.gov">www.wyoming.gov</a></p> <p>WY Facts: <a href="http://eadiv.state.wy.us/Wy_facts/facts07.pdf">http://eadiv.state.wy.us/Wy_facts/facts07.pdf</a></p> <p>Capital: Cheyenne</p> <p>Pop: 522,830 (50<sup>th</sup>); 10<sup>th</sup> largest area</p> <p>GDP: \$31.5 billion (48<sup>th</sup>)</p> <p>Agriculture sales: \$3.8 billion (#21) (EIA)</p> <p>Exports: \$830 million (up 24.1% since 2004)</p> <p>Transportation budget: \$218.4 million (down 9.4%)</p> <p>Renewable fuels: 1 ethanol plant; .3% U.S. alternative fuel vehicles.</p> <p>0% state income or corporate tax</p> <p><b>Key industries:</b> Energy; mining; petrochemical refining (5 refineries); agriculture. The Powder River Basin, most of which lies in northeastern Wyoming, is the largest coal-producing region in the Nation, accounting for approximately 40 percent of all coal mined in the United States. 30 states rely on Wyoming for coal. (EIA 2008).</p> <p><b>Key Rankings:</b> #1 Coal production (41.6% of U.S. total) #1 Mining employment #1 Lowest unemployment rate #2 Natural gas production (2.1 tcf) #2 Wool producer #3 Producer of sheep and lambs #4 State for leisure &amp; hospitality employment #7 Crude oil production (53 million bbl.) #8 Acreage farm land #50 Non-farm employment</p>

**LEARN • PARTICIPATE • JOIN**  
**[www.portstoplains.com](http://www.portstoplains.com)**



# PORTS-TO-PLAINS

## TRADE CORRIDOR ALLIANCE



Securing the Benefits of Commerce to  
North America's Energy & Agricultural Heartland

Wyoming	Total Trade	PTP Trade	PTP Exports	PTP Export Growth Since 2004
<b>Domestic</b>	\$3,574		\$1,564	
<b>Canada</b>	\$776	\$554	\$92	86.50%
<b>Mexico</b>	\$23	\$16	\$10	-85.90%
<b>TOTAL</b>	\$4,373	\$570	\$1,666	

Millions

**Total Trade** – Total Imports and Exports by Truck and Rail

**PTP Trade** – Imports and Exports through Border Crossings along Ports-to-Plains

**PTP Exports** – Exports by Truck and Rail through Border Crossings along Ports-to-Plains

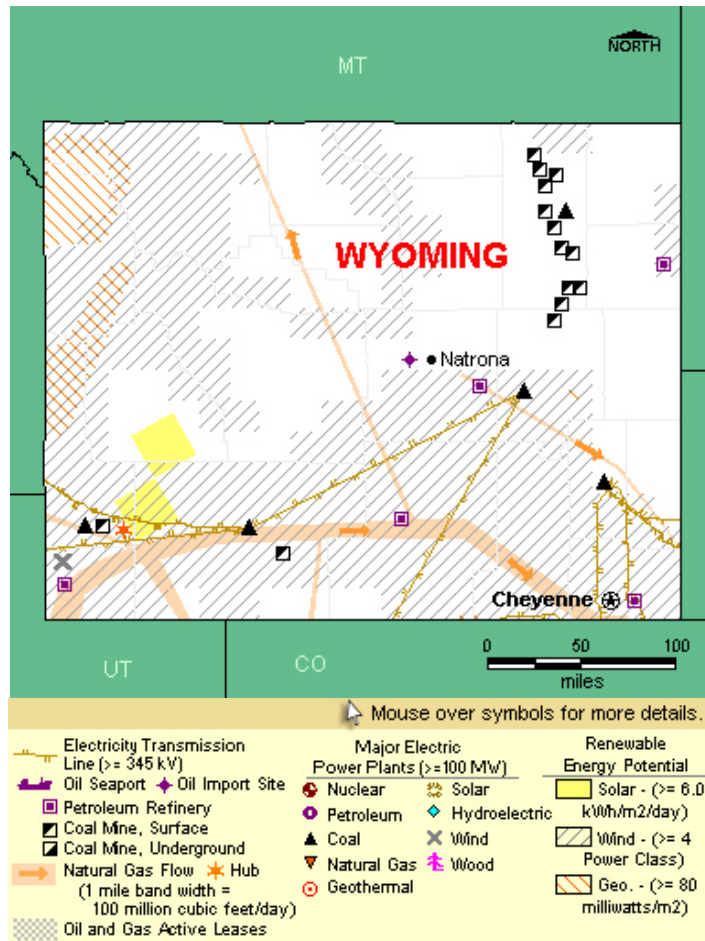
Trade Data from Bureau of Transportation Statistics,

[http://www.bts.gov/programs/international/transborder/TBDR\\_OA.htm](http://www.bts.gov/programs/international/transborder/TBDR_OA.htm)  
!

**LEARN • PARTICIPATE • JOIN**  
**[www.portstoplains.com](http://www.portstoplains.com)**

## Wyoming Energy Resources

(Source: Energy Information Administration)



## Wyoming Quick Facts

- The Powder River Basin, most of which lies in northeastern Wyoming, is the largest coal-producing region in the Nation, accounting for approximately 40 percent of all coal mined in the United States.
- More than 30 States receive coal from Wyoming, and several Midwestern and Southern States are highly or entirely dependent on Wyoming's coal supply.
- Wyoming is one of the top natural gas-producing States in the Nation.
- The Southern Wyoming Corridor is one of the most favorable locations for wind power development in the country.
- The Governors of four Western States are pursuing a 1,300-mile high-capacity power line that would allow Wyoming and other Rocky Mountain States to transmit as much as 12 thousand megawatts of electricity to California.



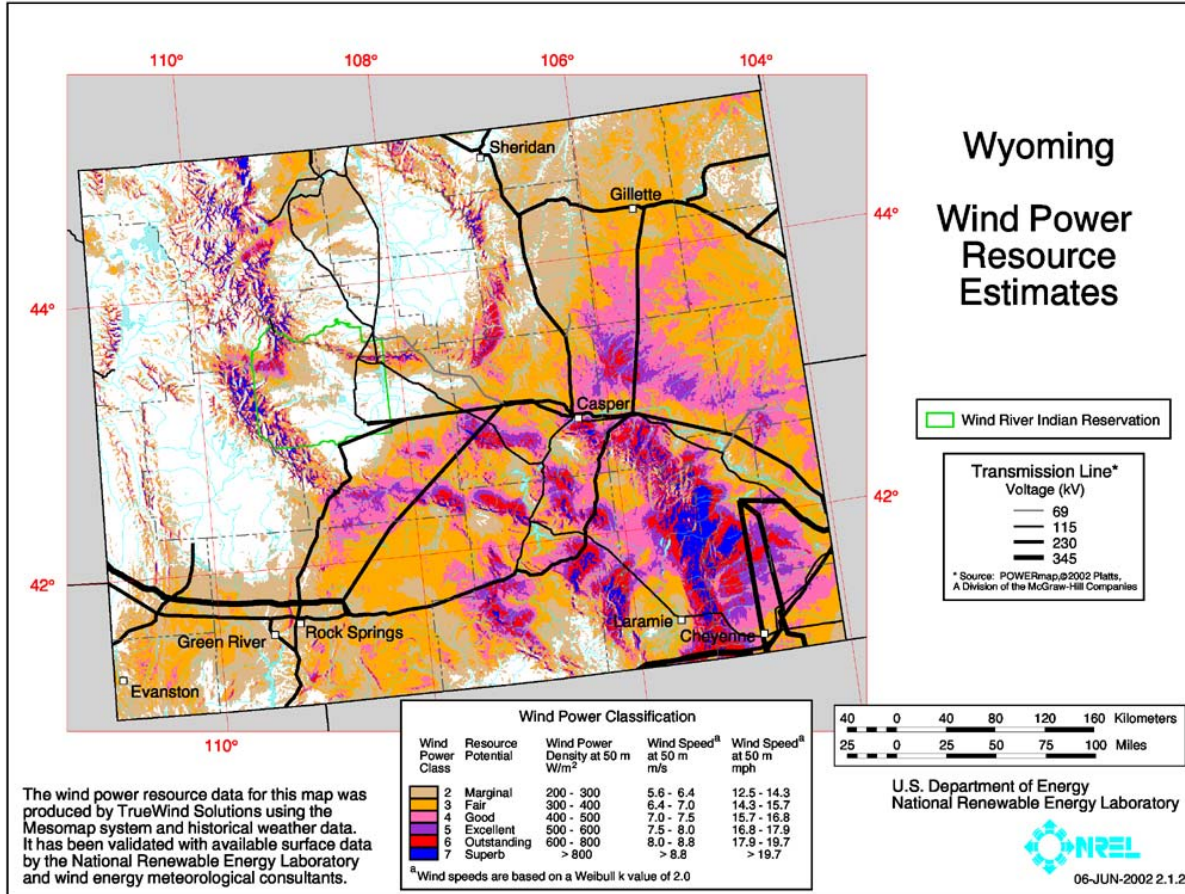
# PORTS-TO-PLAINS

## TRADE CORRIDOR ALLIANCE



Securing the Benefits of Commerce to  
North America's Energy & Agricultural Heartland

### Wyoming Wind Resources



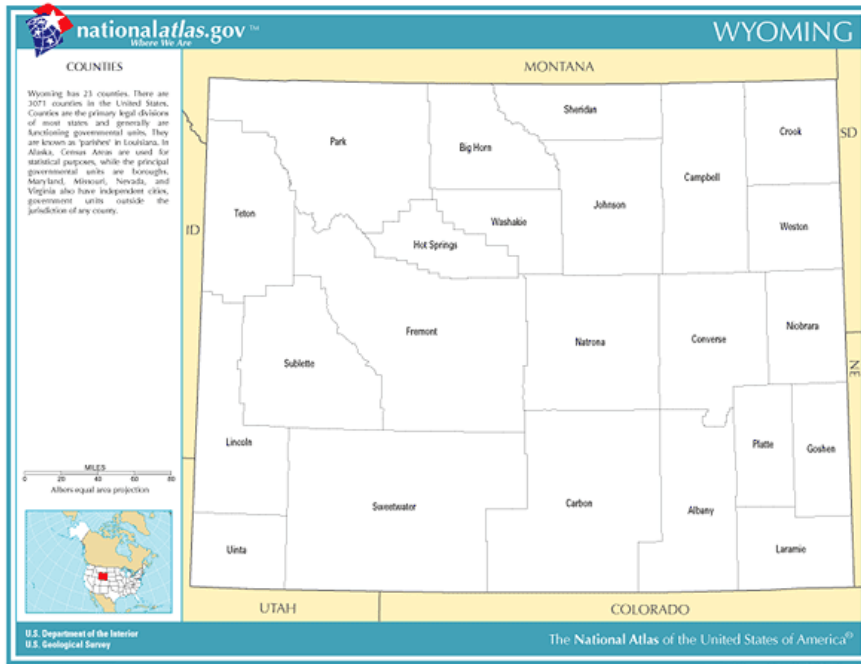
**LEARN • PARTICIPATE • JOIN**  
[www.portstoplains.com](http://www.portstoplains.com)



# PORTS-TO-PLAINS TRADE CORRIDOR ALLIANCE



Securing the Benefits of Commerce to  
North America's Energy & Agricultural Heartland



**U.S. Senator  
Mike Enzi (R)**

**Washington, D.C. Office**  
379A Senate Russell Office Building  
Washington, DC 20510  
Phone: 202-224-3424  
Fax: 202-228-0359

**Cheyenne Office**  
Federal Center, Suite 2007  
2120 Capitol Avenue  
Cheyenne, WY 82001  
Phone: 307-772-2477  
Fax: 307-772-2480

**Website**  
<http://enzi.senate.gov/>

**Ports-to-Plains Alliance Highways**  
U.S. Highway 26 (Heartland Expressway)  
Wyoming/Nebraska State Line to Interstate 25



**LEARN • PARTICIPATE • JOIN**  
[www.portstoplains.com](http://www.portstoplains.com)

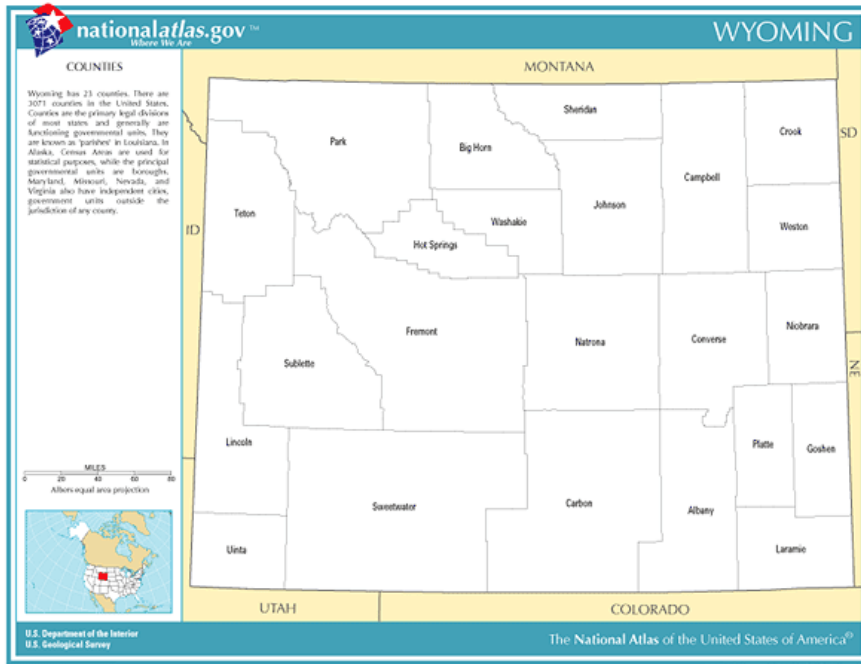


# PORTS-TO-PLAINS

## TRADE CORRIDOR ALLIANCE



Securing the Benefits of Commerce to  
North America's Energy & Agricultural Heartland



**U.S. Senator  
John Barrasso (R)**

**Washington, D.C. Office**  
307 Dirksen Senate  
Office Building  
Washington, D.C. 20510  
Phone: 202-224-6441  
Fax: 202-224-1724

**Cheyenne Office**  
2120 Capitol Avenue  
Suite 2013  
Cheyenne, WY 82001  
Main: 307-772-2451

**Website**  
<http://barrasso.senate.gov/>

**Ports-to-Plains Alliance Highways**  
U.S. Highway 26 (Heartland Expressway)  
Wyoming/Nebraska State Line to Interstate 25



**LEARN • PARTICIPATE • JOIN**  
[www.portstoplains.com](http://www.portstoplains.com)



# PORTS-TO-PLAINS

## TRADE CORRIDOR ALLIANCE



Securing the Benefits of Commerce to  
North America's Energy & Agricultural Heartland

*Congressional District: At large*



[nationalatlas.gov](http://nationalatlas.gov)



**Congresswoman  
Cynthia Lummis (R)**

**Washington, D.C. Office:**

1004 Longworth House Office Building  
Washington, D.C. 20515-5001  
Phone: (202) 225-2311  
Fax: (202) 225-3057

**Casper Office:**

100 East B Street, Suite 4003  
Casper, Wyoming 82602  
Phone: (307) 261-6595  
Fax: (307) 261-6597

**Website:**

<http://lummis.house.gov>

### **Ports-to-Plains Alliance Highways**

U.S. Highway 26 (Heartland Expressway)

Wyoming/Nebraska State Line to Interstate 25



**LEARN • PARTICIPATE • JOIN**  
**[www.portstoplains.com](http://www.portstoplains.com)**